



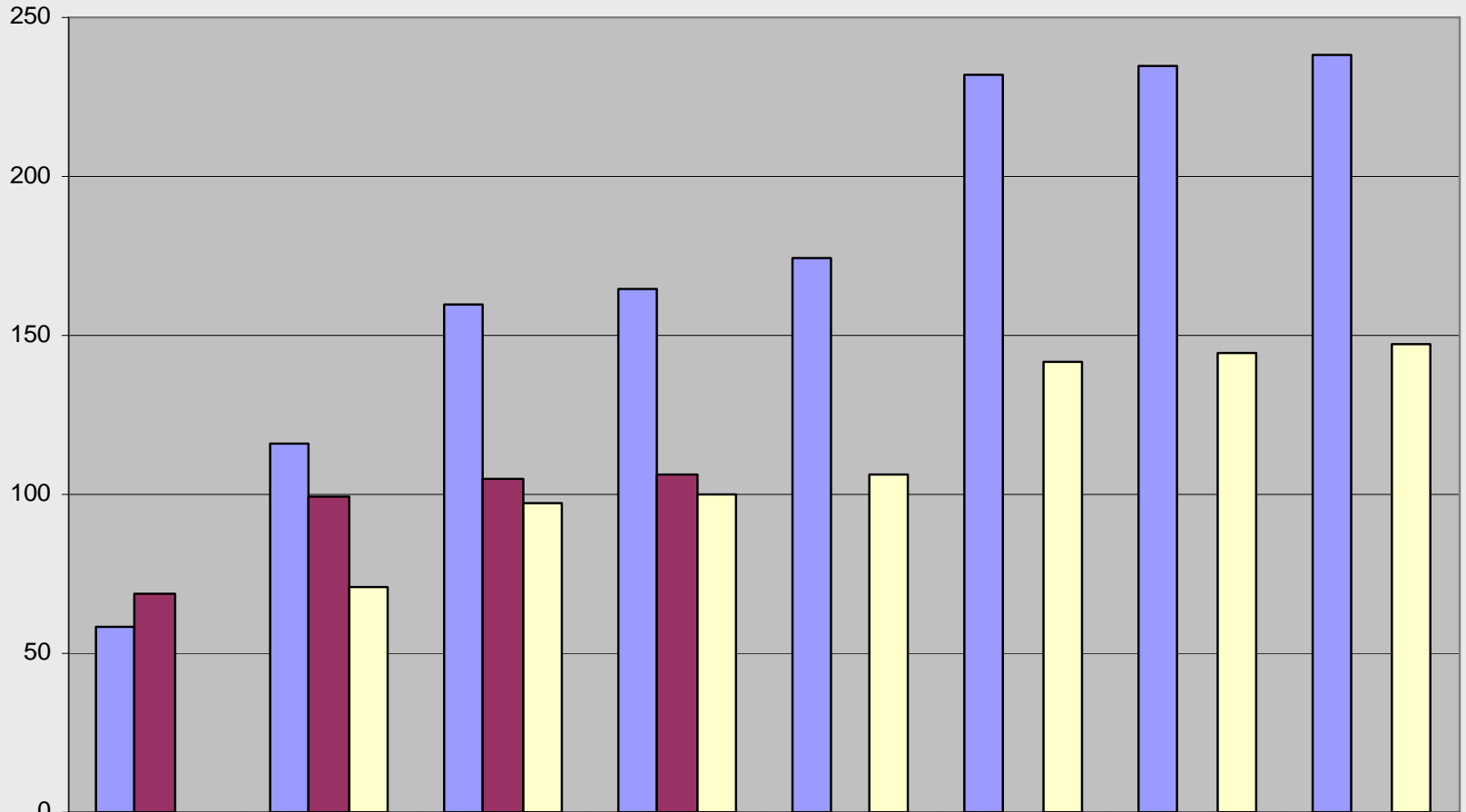
Town of Tewksbury Sewer Expansion Program

**Meeting of the Sewer and Water
Advisory Committee**

May 23, 2007

Phase 6: Sewer Connections

Phase 6: Sewer Connections (cumulative)



2003 Study	58	116	160	164	174	232	235	238
Actual	69	99	105	106				
12.5% Projection		71	97	100	106	142	144	147

Phase 7 Status: Construction Update

as/of: 10/31/06 (22) 10/31/06 (24)	Contract 22 (D&R/MDR)	Contract 24 (Albanese D&S)
Total Mainline Pipe:	28,522 lf	36,057 lf
Installed to date:	28,522 lf (100%)	36,057 lf (100%)
Total # Wyes:	340	399
Installed to date:	340 (100%)	399 (100%)
Calendar Days:	N/A	N/A
Days to date:	N/A	N/A
Total Contract Value:	\$3,705,828	\$4,307,926
Invoiced to date:	\$3,527,698 (95%)	\$4,307,926 (100%)

Phase 7 Status: Construction Update

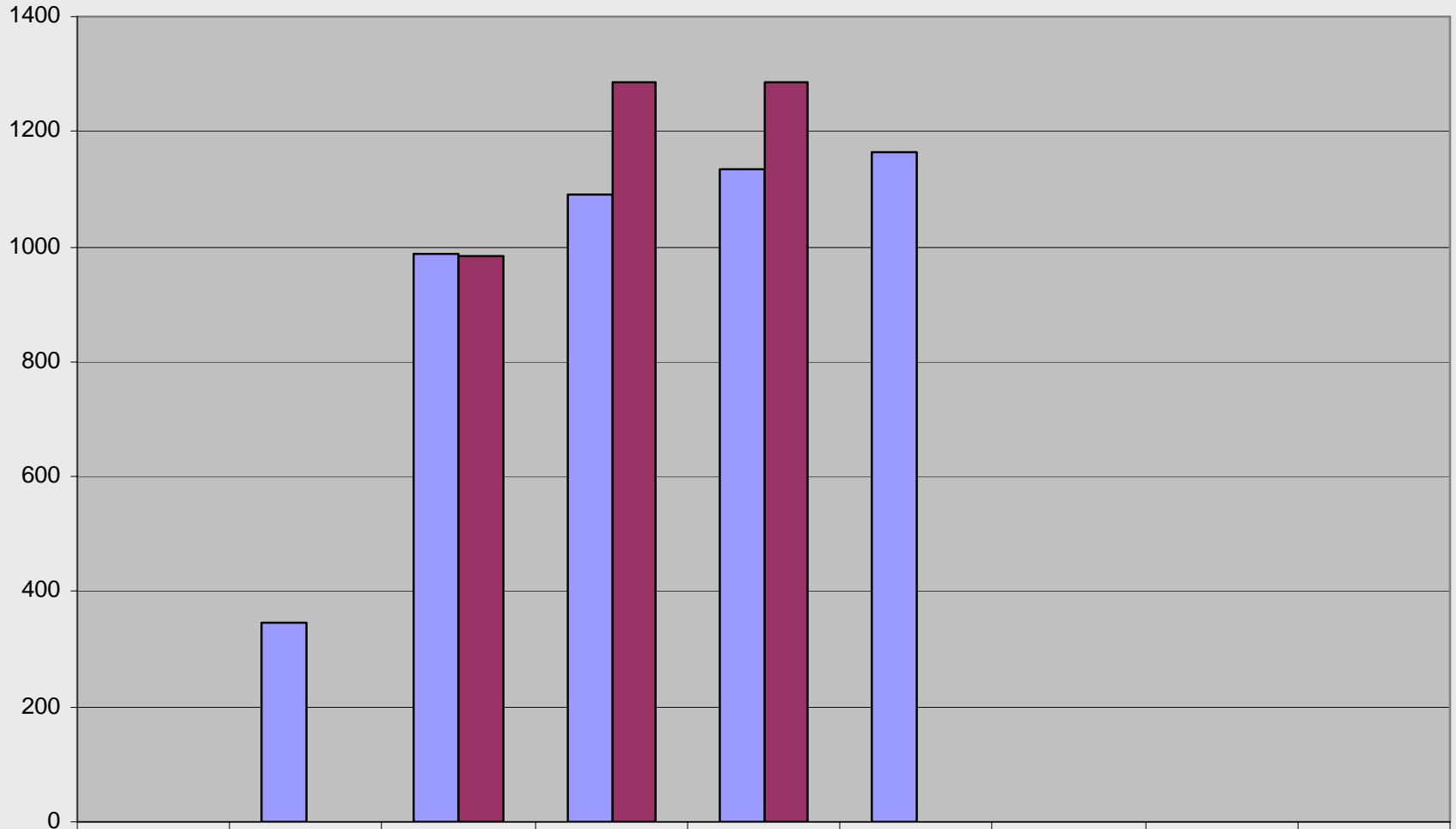
as/of: 03/16/07 (23) 03/31/07 (25)	Contract 23 (SB)	Contract 25 (Albanese D&S)
Total Mainline Pipe:	26,043 lf	20,465 lf
Installed to date:	26,043 (100%)	20,465 (100%)
Total # Wyes:	288	253
Installed to date:	288 (100%)	253 (100%)
Calendar Days:	N/A	N/A
Days to date:	N/A	N/A
Total Contract Value:	\$4,084,545	\$3,636,430
Invoiced to date:	\$4,174,766 (102%)	\$3,505,069 (96%)

Phase 7 Status: Construction Issues

- **Contract 22 Rock Claim**
- **Final Paving**

Phase 7: Sewer Availability

Phase 7: Sewer Availability (cumulative)



■ 2003 Study

■ Actual

FY 04

FY 05

FY 06

1/31/2007

4/30/2007

FY 07

FY 08

FY 09

FY 10

0

348

989

1091

1134

1163

0

0

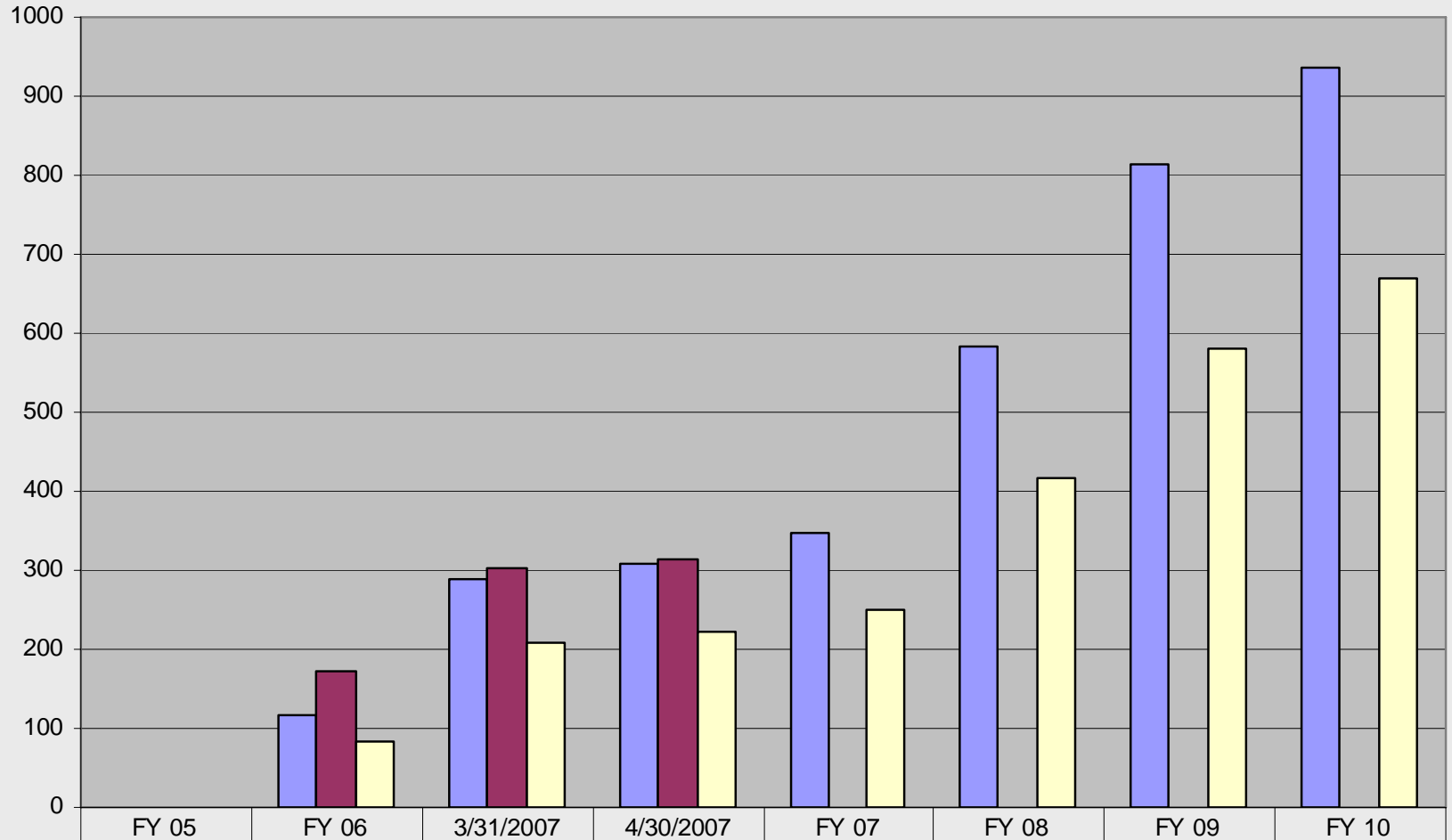
982

1284

1284

Phase 7: Sewer Connections

Phase 7: Sewer Connections (cumulative)



2003 Study	0	116	290	309	348	582	815	937
Actual	0	171	302	314				
12.5% Projection		85	209	223	250	416	582	669

Phase 8 Status: Construction Update

as/of: 12/31/06 (26) 03/31/07 (27)	Contract 26 (CJP)	Contract 27 (Albanese D&S)
Total Mainline Pipe:	29,451 lf	36,399 lf
Installed to date:	29,451 (100%)	36,399 (100%)
Total # Wyes:	289	352
Installed to date:	289 (100%)	352 (100%)
Calendar Days:	N/A	N/A
Days to date:	N/A	N/A
Total Contract Value:	\$4,841,403	\$6,071,357
Invoiced to date:	\$4,975,761 (103%)	\$6,040,104 (99%)

Phase 8 Status: Construction Update

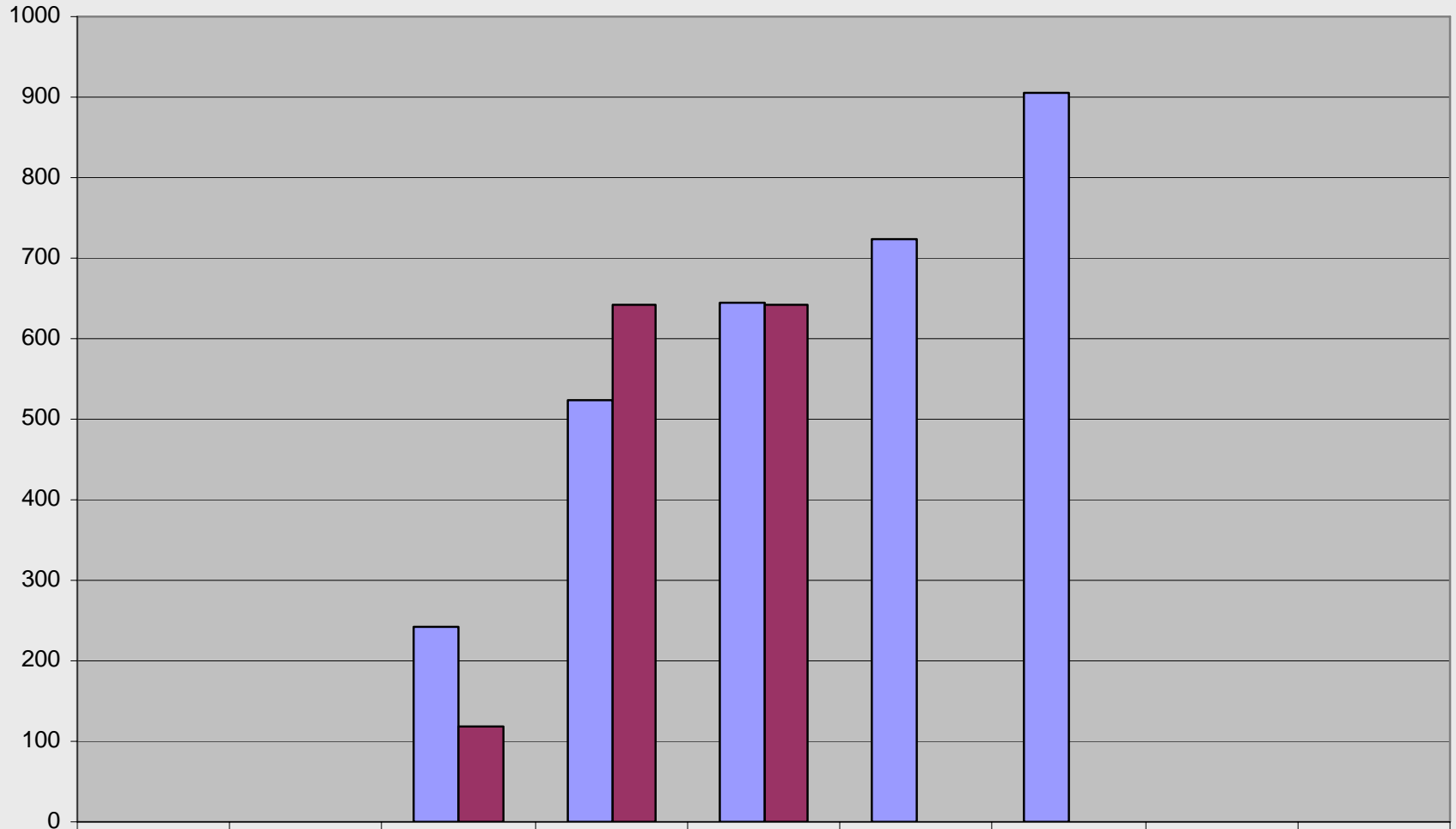
as/of: 01/31/07 (28)	Contract 28 (Revoli)
Total Mainline Pipe:	21,530 lf
Installed to date:	7,792 (36%)
Total # Wyes:	230
Installed to date:	69 (30%)
Calendar Days:	540
Days to date:	213 (39%)
Total Contract Value:	\$4,979,521
Invoiced to date:	\$1,483,186 (30%)

Phase 8 Status: Construction Issues

- **Contract 28 Change Order Requests**
- **Final Paving**

Phase 8: Sewer Availability

Phase 8: Sewer Availability (cumulative)

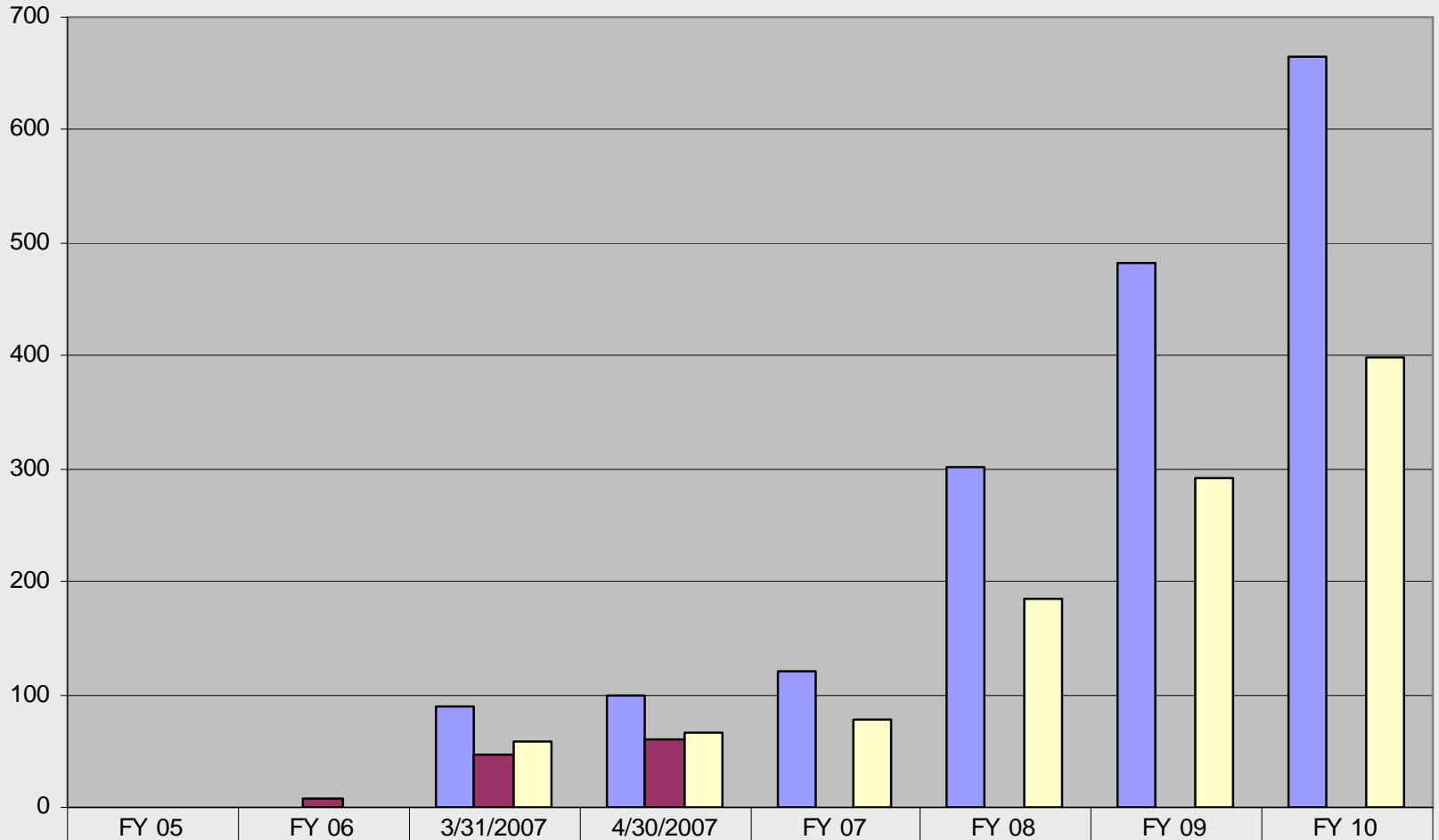


■ 2003 Study

■ Actual

Phase 8: Sewer Connections

Phase 8: Sewer Connections (cumulative)



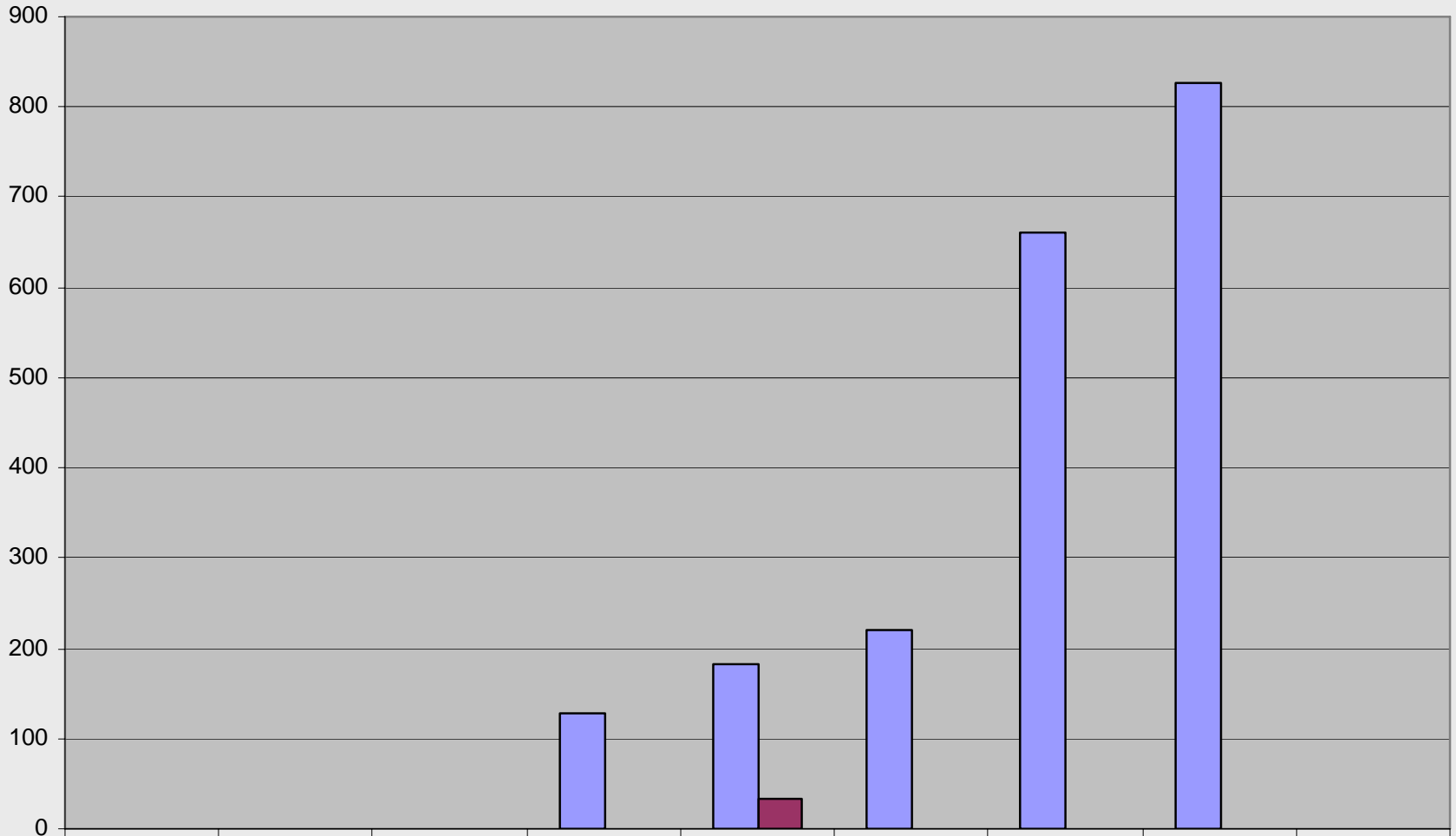
2003 Study	0	0	90	100	120	302	483	665
Actual	0	7	46	61				
12.5% Projection		0	59	66	79	185	292	399

Phase 9 Status: Construction Update

as/of: 02/28/07 (29) 02/28/07 (30)	Contract 29 (Albanese Bros.)	Contract 30 (Albanese D&S)
Total Mainline Pipe:	33,100 lf	28,575 lf
Installed to date:	12,709 (38%)	6,379 (22%)
Total # Wyes:	325	250
Installed to date:	106 (33%)	66 (26%)
Calendar Days:	540	540
Days to date:	245 (45%)	165 (31%)
Total Contract Value:	\$6,296,075	\$5,420,976
Invoiced to date:	\$2,037,322 (32%)	\$1,191,198 (22%)

Phase 9: Sewer Availability

Phase 9: Sewer Availability (cumulative)

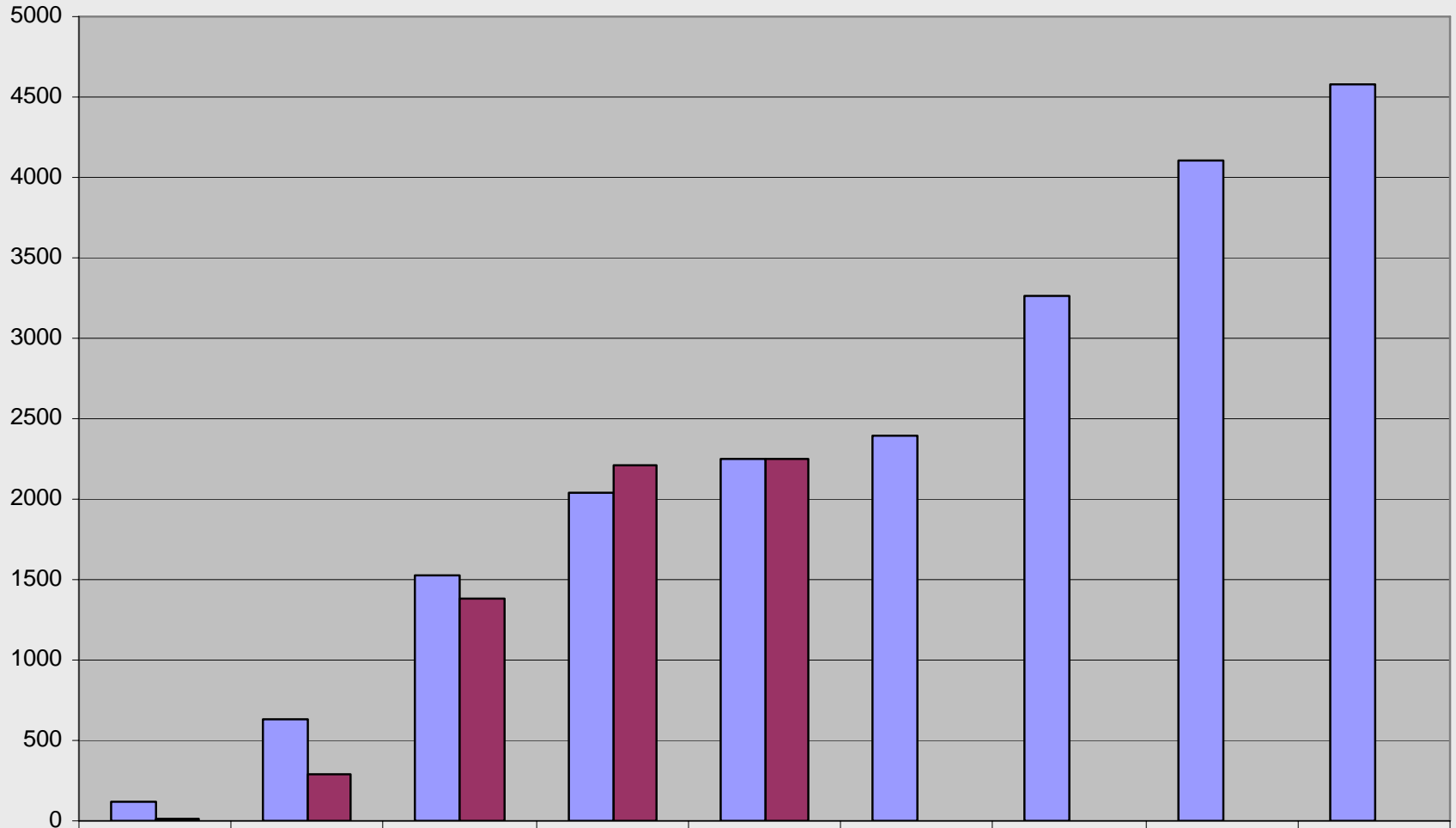


■ 2003 Study

■ Actual

Program Totals: Sewer Availability

Program Totals: Sewer Availability (cumulative)



■ 2003 Study

■ Actual

FY 04

FY 05

FY 06

1/31/2007

4/30/2007

FY 07

FY 08

FY 09

FY 10

116

638

1521

2033

2252

2398

3263

4108

4573

14

288

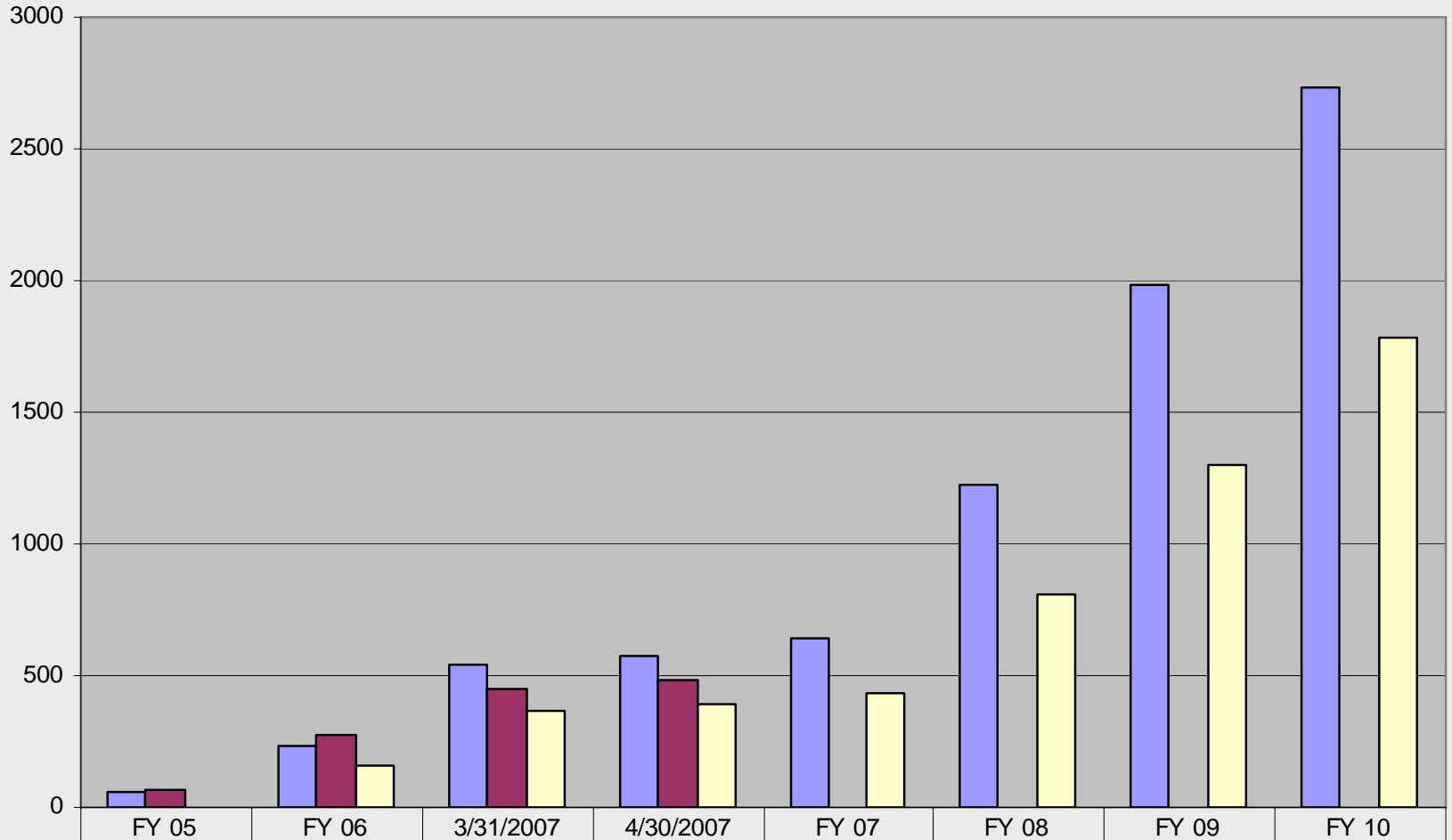
1388

2213

2245

Program Totals: Sewer Connections

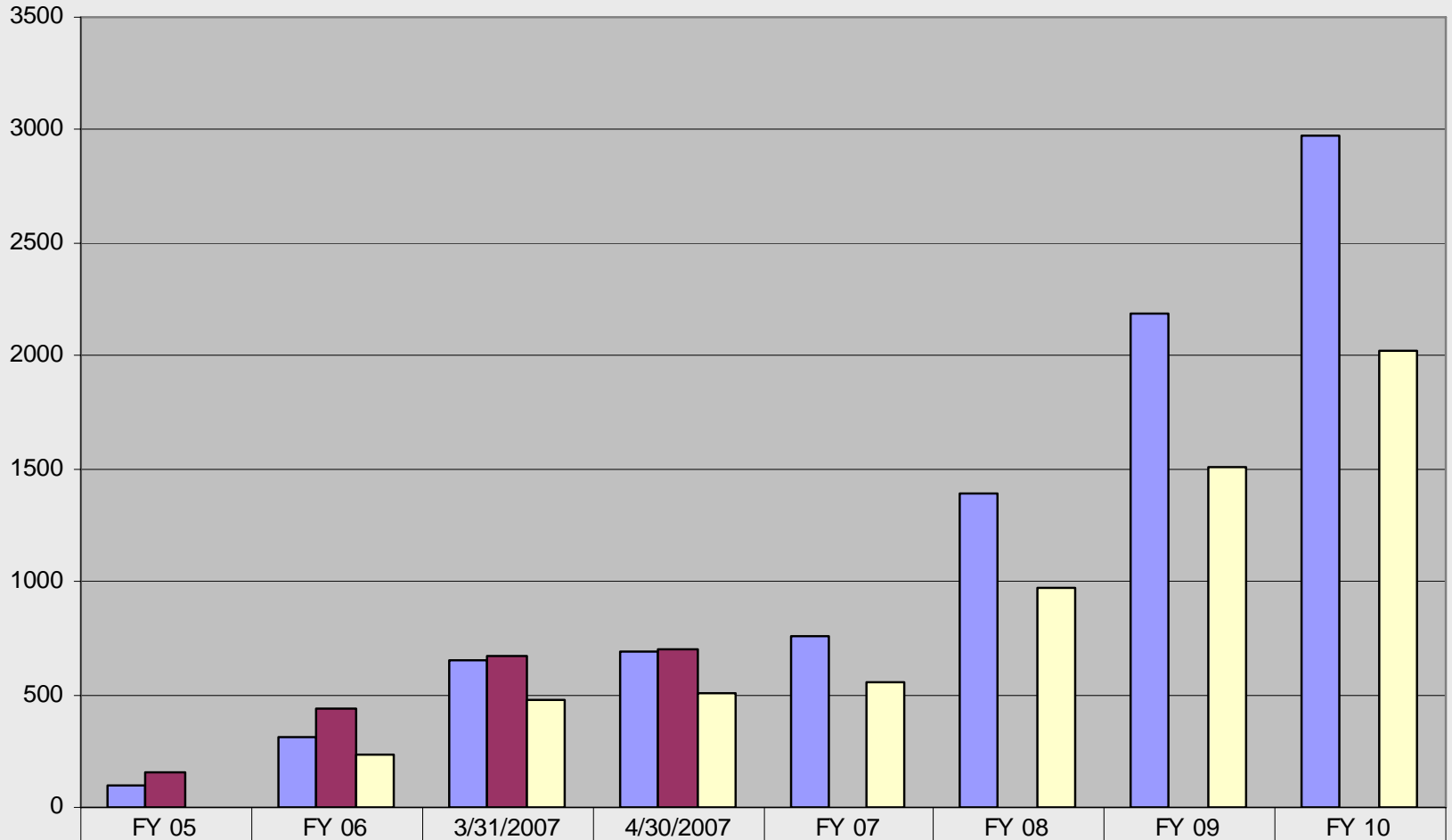
Program Totals: Sewer Connections (cumulative)



2003 Study	58	232	540	574	642	1226	1982	2732
Actual	69	277	453	481				
12.5% Projection		155	365	389	435	812	1303	1780

Town-Wide Totals: Sewer Connections

Town-Wide Sewer Connections (cumulative)



2003 Study	98	312	650	688	763	1388	2186	2978
Actual	156	440	669	699				
12.5% Projection		235	476	503	556	974	1507	2026

Sewer Program Summary

■ Total Construction Contracts:	16
➤ Completed (21 thru 27):	7
➤ Under Construction (28 thru 31):	4
➤ Under Design (32 & 33):	2
➤ Survey Underway (34, 35 & 36):	3