



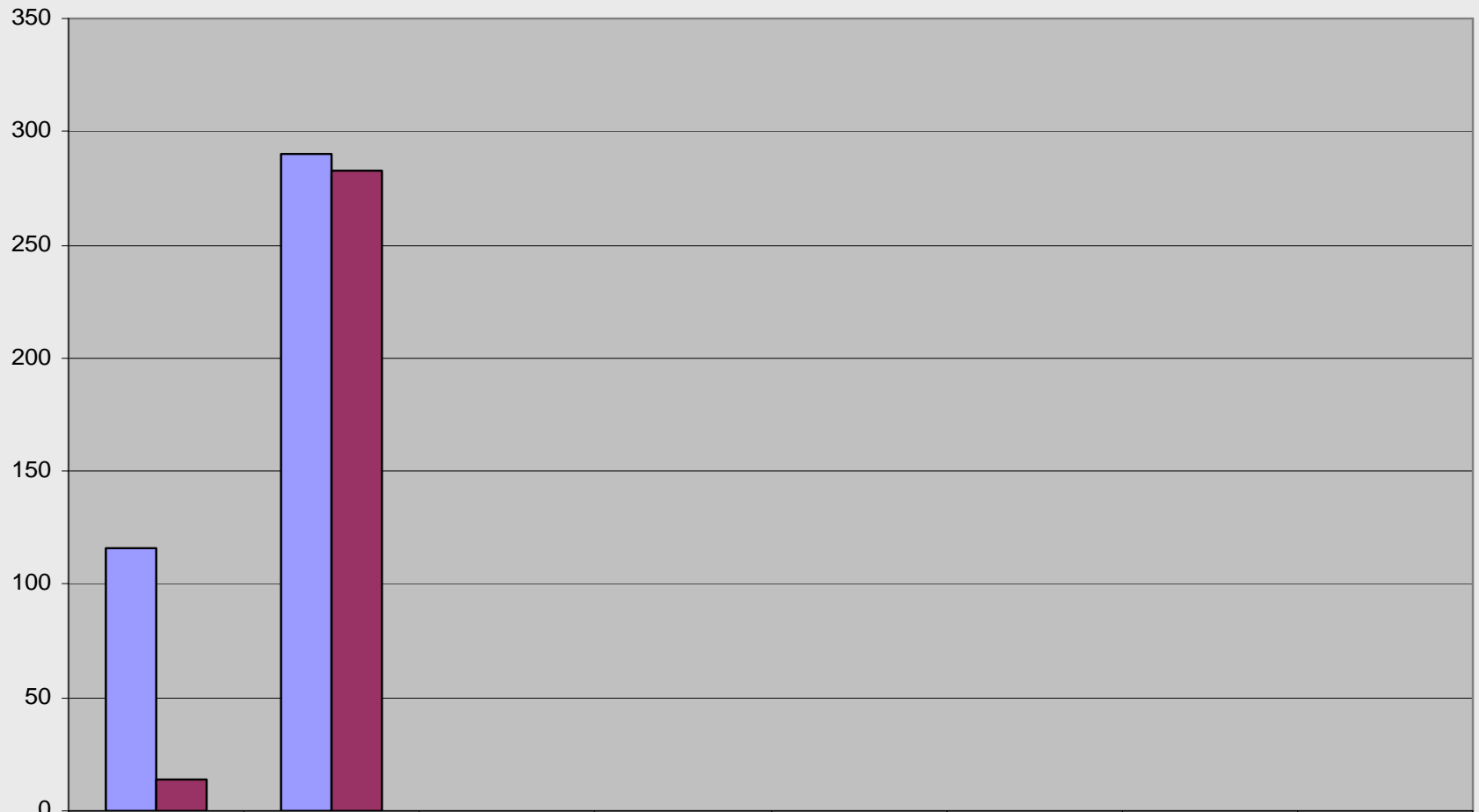
## **Town of Tewksbury Sewer Expansion Program**

**Meeting of the Sewer and Water  
Advisory Committee**

**August 23, 2006**

# Phase 6: Sewer Availability

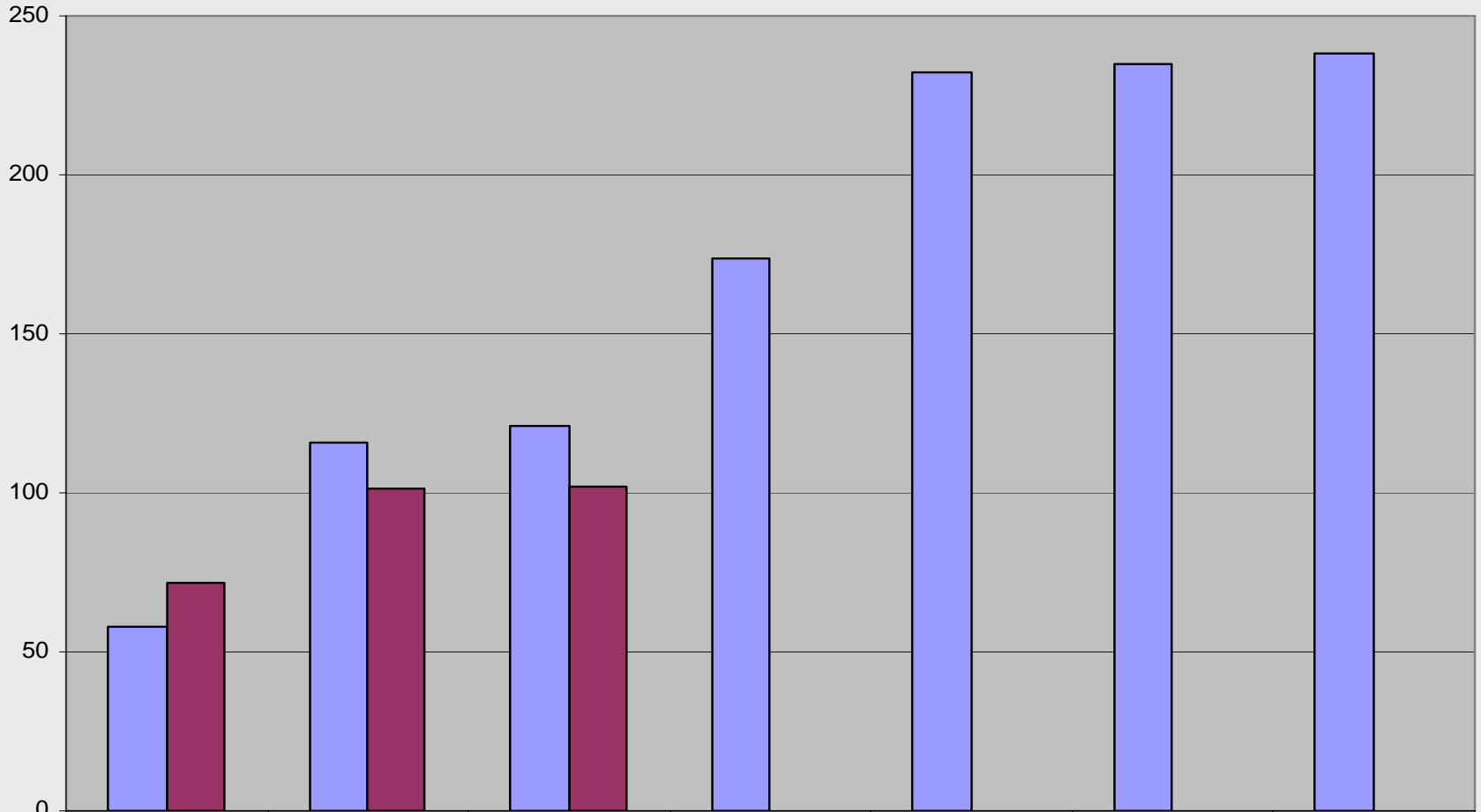
Phase 6: Sewer Availability (cumulative)



2003 Study	116	290						
Actual	14	283						

# Phase 6: Sewer Connections

Phase 6: Sewer Connections (cumulative)



2003 Study	58	116	121	174	232	235	238
Actual	72	101	102				

# Phase 7 Status: Construction Update

<b>as/of: 06/30/06 (22) 06/23/06 (24)</b>	<b>Contract 22 (D&amp;R/MDR)</b>	<b>Contract 24 (Albanese D&amp;S)</b>
<b>Total Mainline Pipe:</b>	<b>28,522 lf</b>	<b>36,057 lf</b>
<b>Installed to date:</b>	<b>28,522 lf (100%)</b>	<b>36,057 lf (100%)</b>
<b>Total # Wyes:</b>	<b>340</b>	<b>399</b>
<b>Installed to date:</b>	<b>340 (100%)</b>	<b>399 (100%)</b>
<b>Calendar Days:</b>	<b>N/A</b>	<b>N/A</b>
<b>Days to date:</b>	<b>N/A</b>	<b>N/A</b>
<b>Total Contract Value:</b>	<b>\$3,705,828</b>	<b>\$4,690,397</b>
<b>Invoiced to date:</b>	<b>\$3,519,601 (95%)</b>	<b>\$4,260,837 (91%)</b>

# Phase 7 Status: Construction Update

<b>as/of: 07/31/06 (23) 06/23/06 (25)</b>	<b>Contract 23 (SB)</b>	<b>Contract 25 (Albanese D&amp;S)</b>
<b>Total Mainline Pipe:</b>	<b>28,570 lf</b>	<b>20,465 lf</b>
<b>Installed to date:</b>	<b>23,347 (82%)</b>	<b>20,465 (100%)</b>
<b>Total # Wyes:</b>	<b>340</b>	<b>253</b>
<b>Installed to date:</b>	<b>239 (70%)</b>	<b>253 (100%)</b>
<b>Calendar Days:</b>	<b>750</b>	<b>N/A</b>
<b>Days to date:</b>	<b>669 (89%)</b>	<b>N/A</b>
<b>Total Contract Value:</b>	<b>\$3,947,335</b>	<b>\$3,636,430</b>
<b>Invoiced to date:</b>	<b>\$3,486,303 (88%)</b>	<b>\$3,417,063 (94%)</b>

# **Phase 7 Status: Construction Issues**

- **DEP Consent Order – South Street Culvert**
- **Pumping Station Startup**
- **Final Paving 2006 & 2007**

# Phase 7: Sewer Availability

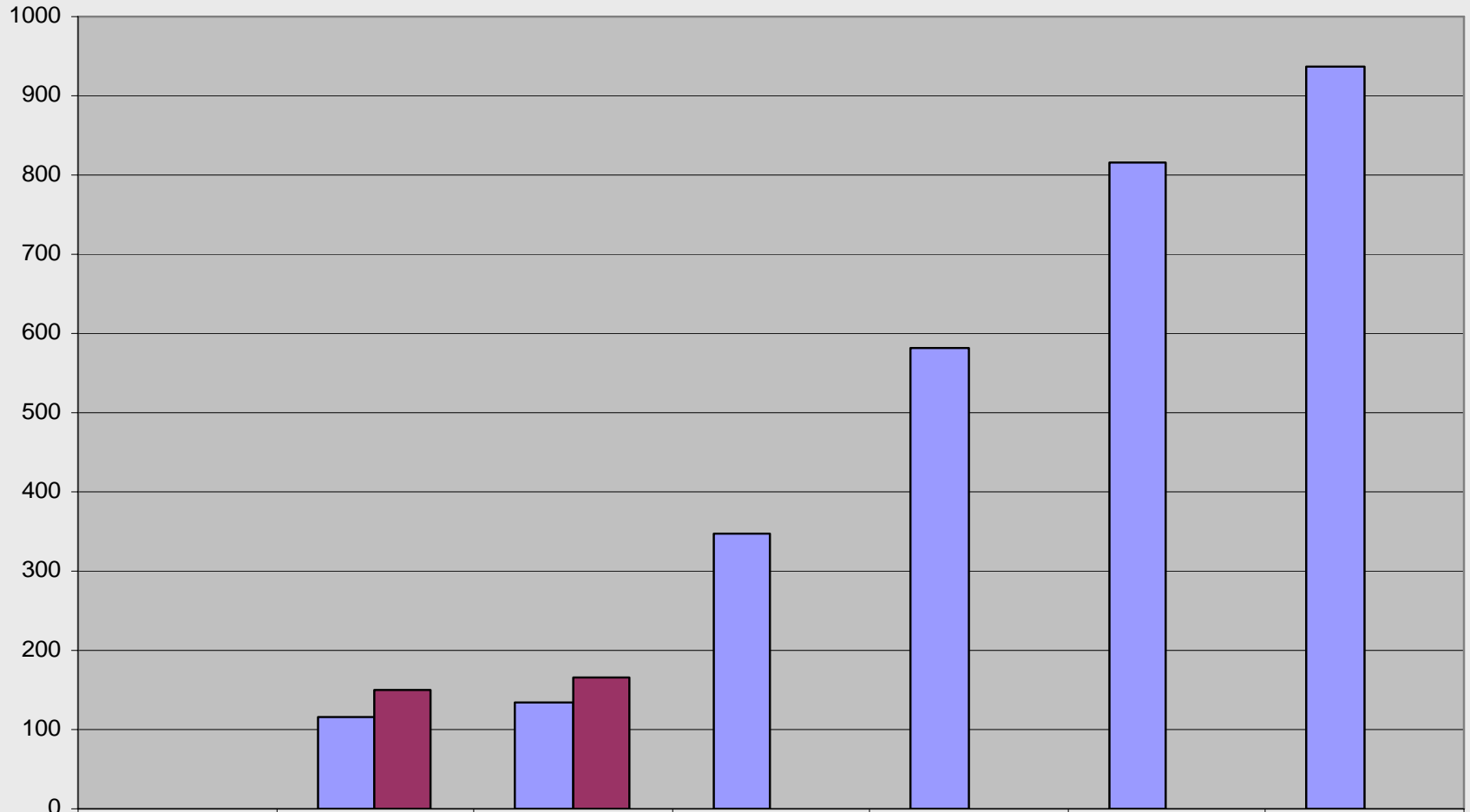
Phase 7: Sewer Availability (cumulative)



2003 Study	0	348	989	1004	1163			
Actual	0	0	991	991				

# Phase 7: Sewer Connections

Phase 7: Sewer Connections (cumulative)



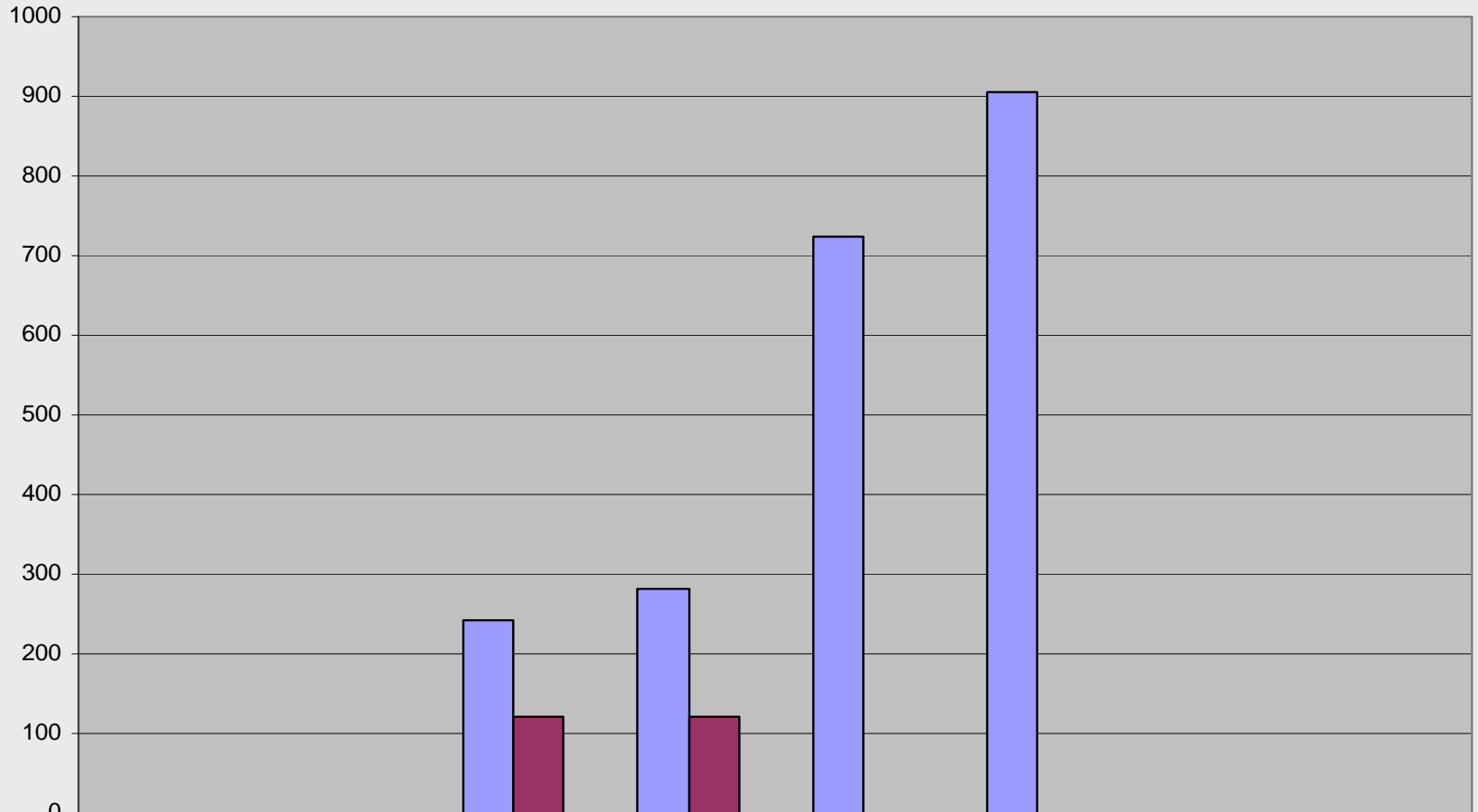
2003 Study	0	116	135	348	582	815	937
Actual	0	150	167				

# Phase 8 Status: Construction Update

<b>as/of: 06/30/06 (26) 06/30/06 (27)</b>	<b>Contract 26 (CJP)</b>	<b>Contract 27 (Albanese D&amp;S)</b>
<b>Total Mainline Pipe:</b>	<b>29,451 lf</b>	<b>35,050 lf</b>
<b>Installed to date:</b>	<b>29,451 (100%)</b>	<b>23,894 (68%)</b>
<b>Total # Wyes:</b>	<b>289</b>	<b>350</b>
<b>Installed to date:</b>	<b>289 (100%)</b>	<b>235 (67%)</b>
<b>Calendar Days:</b>	<b>540</b>	<b>630</b>
<b>Days to date:</b>	<b>434 (80%)</b>	<b>311 (49%)</b>
<b>Total Contract Value:</b>	<b>\$4,732,464</b>	<b>\$5,823,484</b>
<b>Completed to date:</b>	<b>\$4,369,836 (92%)</b>	<b>\$3,579,414 (61%)</b>

# Phase 8: Sewer Availability

Phase 8: Sewer Availability (cumulative)



2003 Study

FY 04

FY 05

FY 06

7/31/2006

FY 07

FY 08

FY 09

FY 10

0

0

242

282

725

906

Actual

0

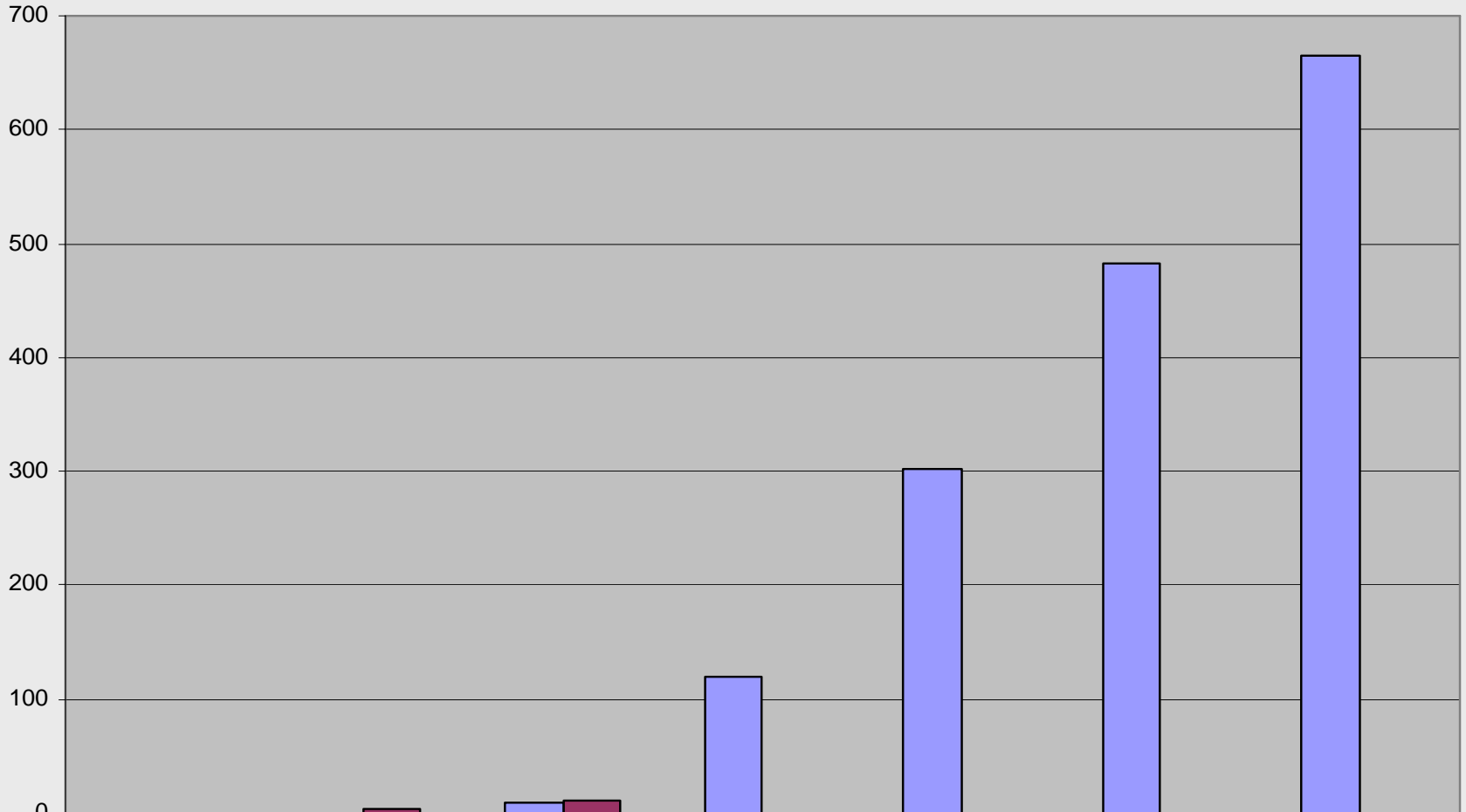
0

120

120

# Phase 8: Sewer Connections

Phase 8: Sewer Connections (cumulative)



■ 2003 Study

■ Actual

FY 05

FY 06

7/31/2006

FY 07

FY 08

FY 09

FY 10

0

0

10

120

302

483

665

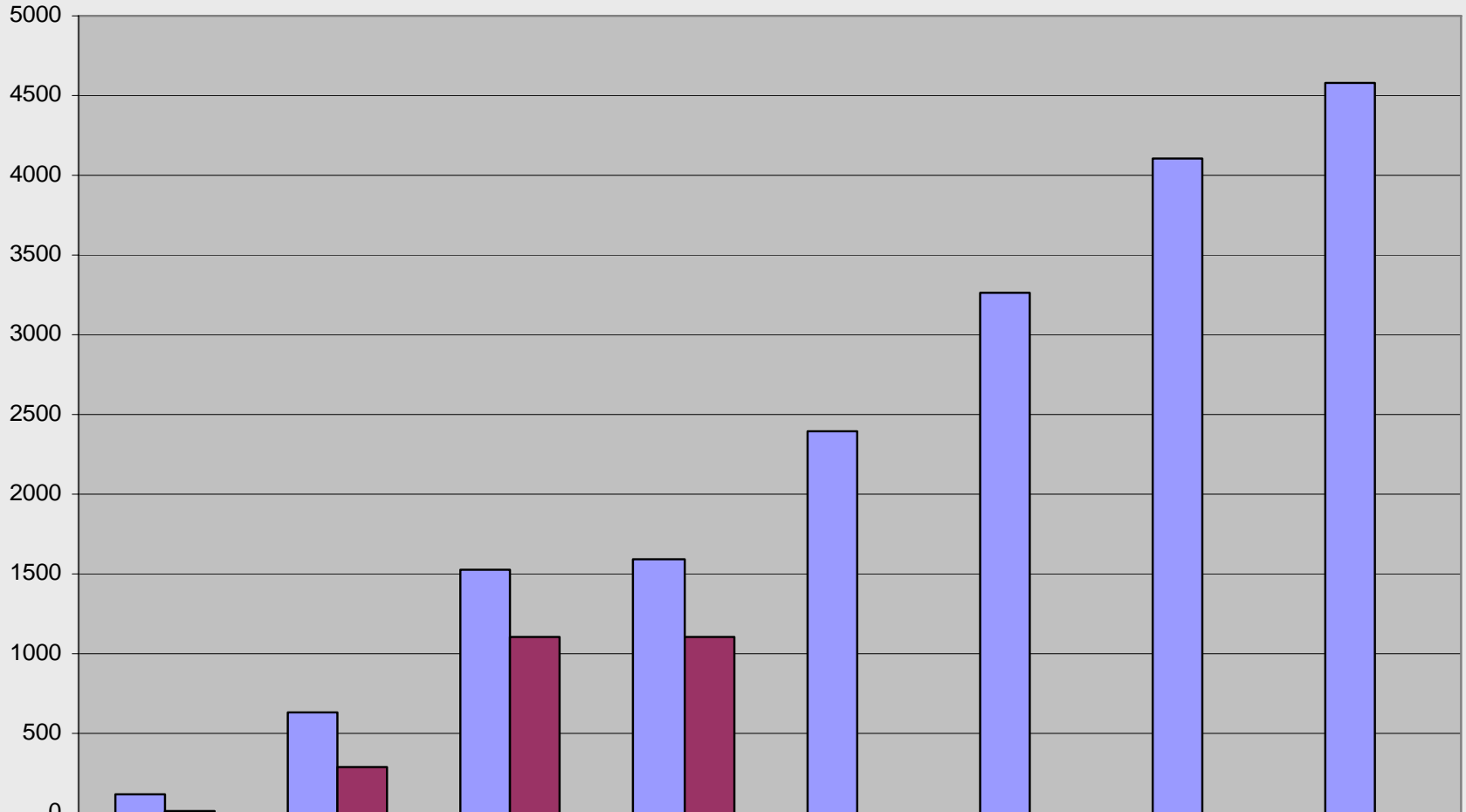
0

4

11

# Program Totals: Sewer Availability

Program Totals: Sewer Availability (cumulative)



■ 2003 Study

■ Actual

FY 04

FY 05

FY 06

7/31/2006

FY 07

FY 08

FY 09

FY 10

116

638

1521

1594

2398

3263

4108

4573

14

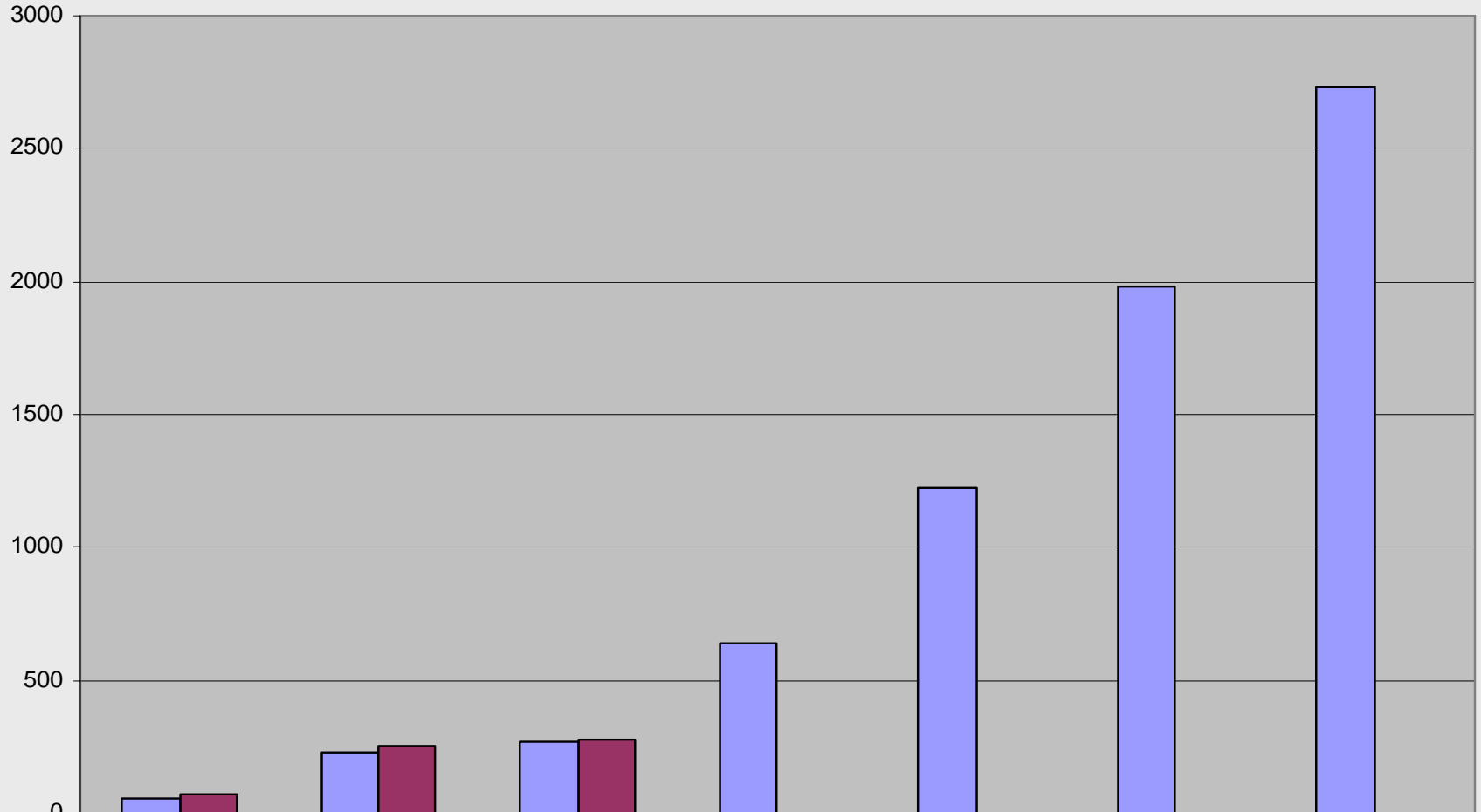
283

1111

1111

# Program Totals: Sewer Connections

Program Totals: Sewer Connections (cumulative)



2003 Study	58	232	266	642	1226	1982	2732
Actual	72	255	280				

# **Phase 9 Status: Design Issues**

- **National Grid Access Road**
- **Easements**
- **Connections to Lowell**

# Sewer Program Summary

■ Total Construction Contracts:	16
➤ Completed (21, 22, 24, 25 & 26):	5
➤ Under Construction (23, 27, 28 & 29):	4
➤ Awaiting Award (30):	1
➤ Under Design (31, 32 & 33):	3
➤ Remaining (34-36):	3