



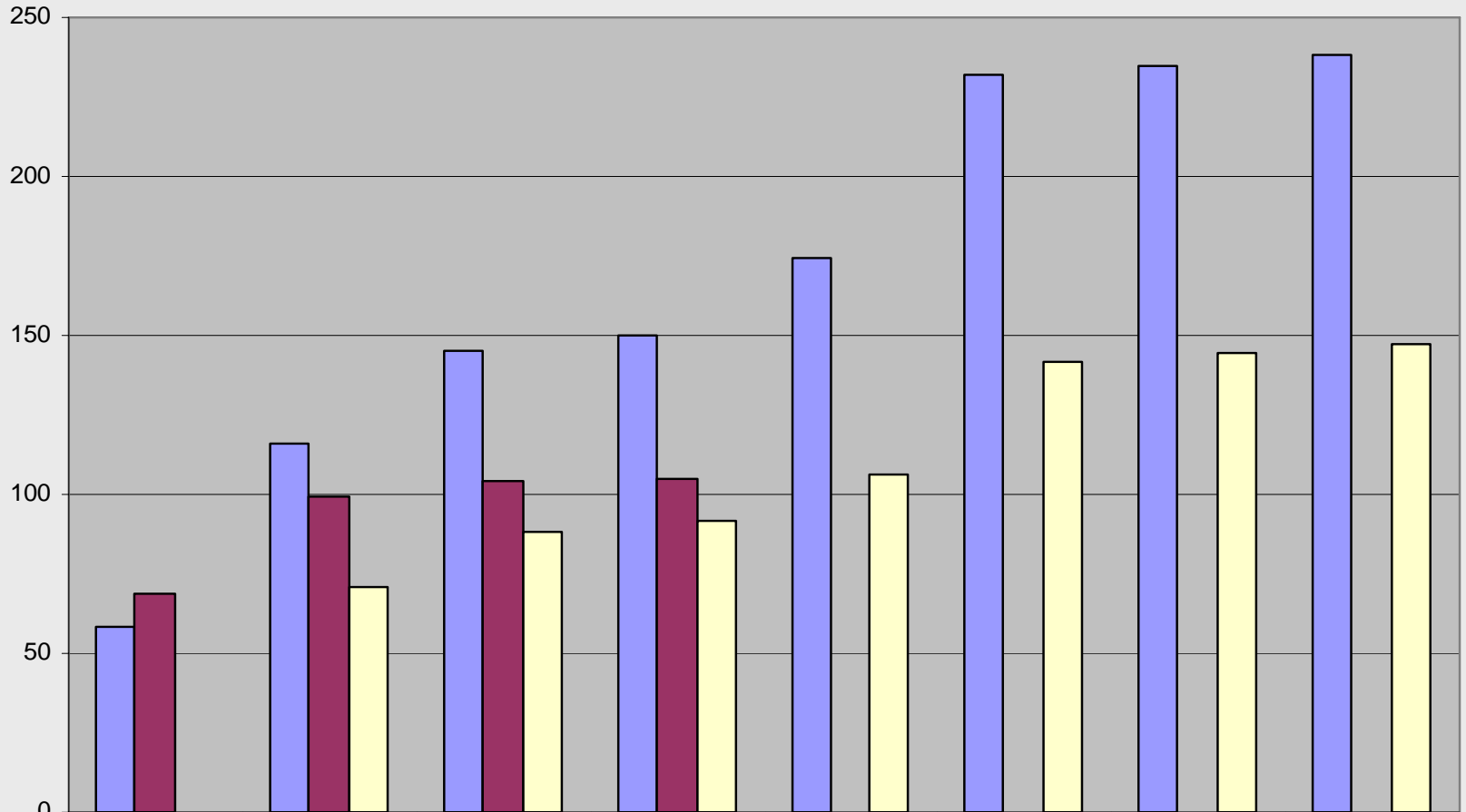
Town of Tewksbury Sewer Expansion Program

**Meeting of the Sewer and Water
Advisory Committee**

February 21, 2007

Phase 6: Sewer Connections

Phase 6: Sewer Connections (cumulative)



2003 Study	58	116	145	150	174	232	235	238
Actual	69	99	104	105				
12.5% Projection		71	88	91	106	142	144	147

Phase 7 Status: Construction Update

as/of: 08/31/06 (22) 10/31/06 (24)	Contract 22 (D&R/MDR)	Contract 24 (Albanese D&S)
Total Mainline Pipe:	28,522 lf	36,057 lf
Installed to date:	28,522 lf (100%)	36,057 lf (100%)
Total # Wyes:	340	399
Installed to date:	340 (100%)	399 (100%)
Calendar Days:	N/A	N/A
Days to date:	N/A	N/A
Total Contract Value:	\$3,705,828	\$4,307,926
Invoiced to date:	\$3,525,458 (95%)	\$4,307,926 (100%)

Phase 7 Status: Construction Update

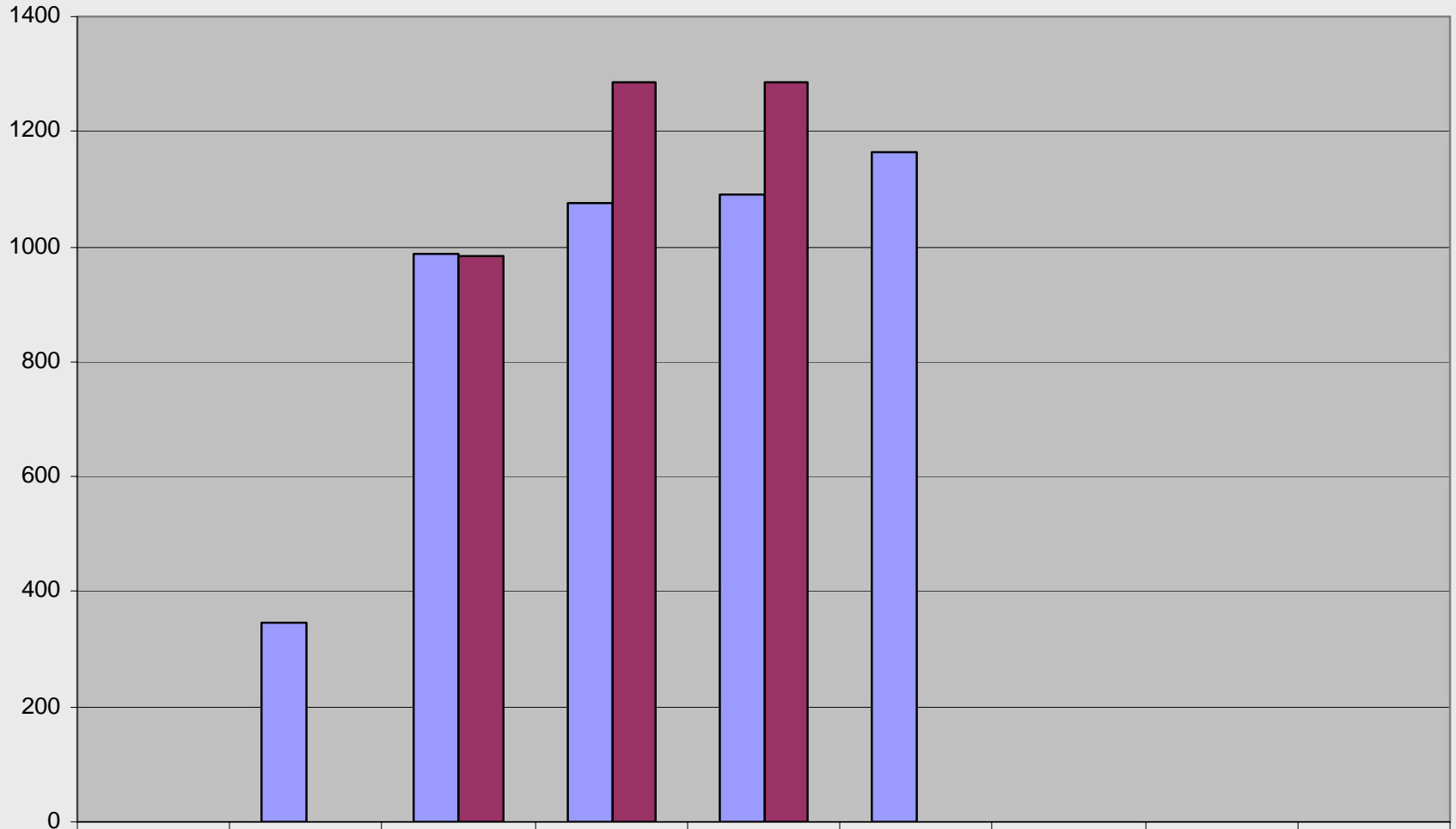
as/of: 12/07/06 (23) 12/31/06 (25)	Contract 23 (SB)	Contract 25 (Albanese D&S)
Total Mainline Pipe:	26,043 lf	20,465 lf
Installed to date:	26,043 (100%)	20,465 (100%)
Total # Wyes:	288	253
Installed to date:	288 (100%)	253 (100%)
Calendar Days:	N/A	N/A
Days to date:	N/A	N/A
Total Contract Value:	\$4,053,586	\$3,510,000
Invoiced to date:	\$4,097,539 (101%)	\$3,503,813 (100%)

Phase 7 Status: Construction Issues

- **Contract 22 Rock Claim**
- **Contracts 22, 23 and 25 Punch List Work**
- **Final Paving**

Phase 7: Sewer Availability

Phase 7: Sewer Availability (cumulative)



2003 Study

FY 04

FY 05

FY 06

12/31/2006

1/31/2007

FY 07

FY 08

FY 09

FY 10

0

348

989

1076

1091

1163

0

0

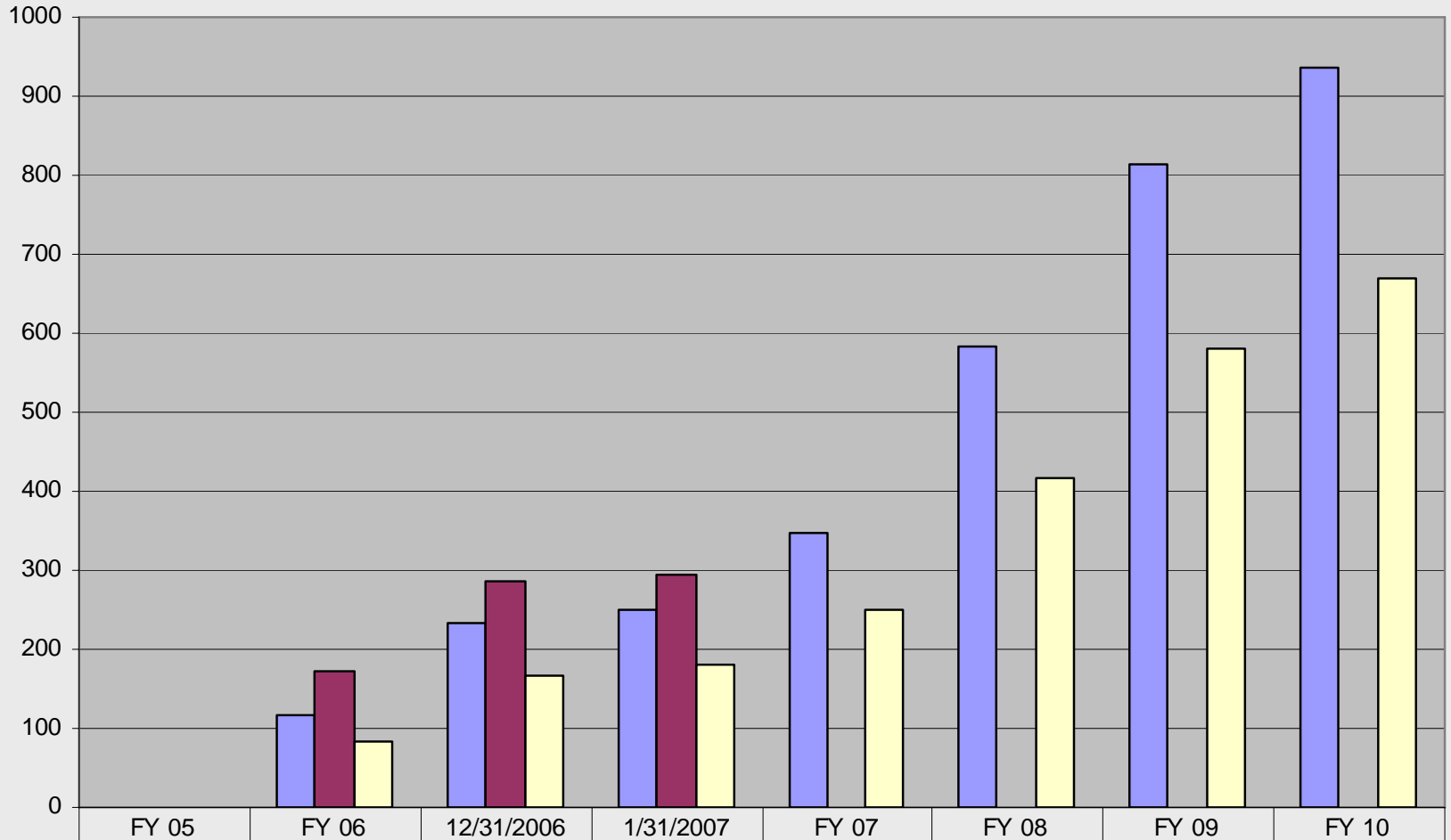
982

1284

1284

Phase 7: Sewer Connections

Phase 7: Sewer Connections (cumulative)



2003 Study	0	116	232	251	348	582	815	937
Actual	0	171	285	294				
12.5% Projection		85	167	181	250	416	582	669

Phase 8 Status: Construction Update

as/of: 12/31/06 (26) 12/31/06 (27)	Contract 26 (CJP)	Contract 27 (Albanese D&S)
Total Mainline Pipe:	29,451 lf	36,399 lf
Installed to date:	29,451 (100%)	36,399 (100%)
Total # Wyes:	289	352
Installed to date:	289 (100%)	352 (100%)
Calendar Days:	N/A	N/A
Days to date:	N/A	N/A
Total Contract Value:	\$4,841,403	\$5,993,357
Invoiced to date:	\$4,975,761 (103%)	\$5,835,408 (97%)

Phase 8 Status: Construction Update

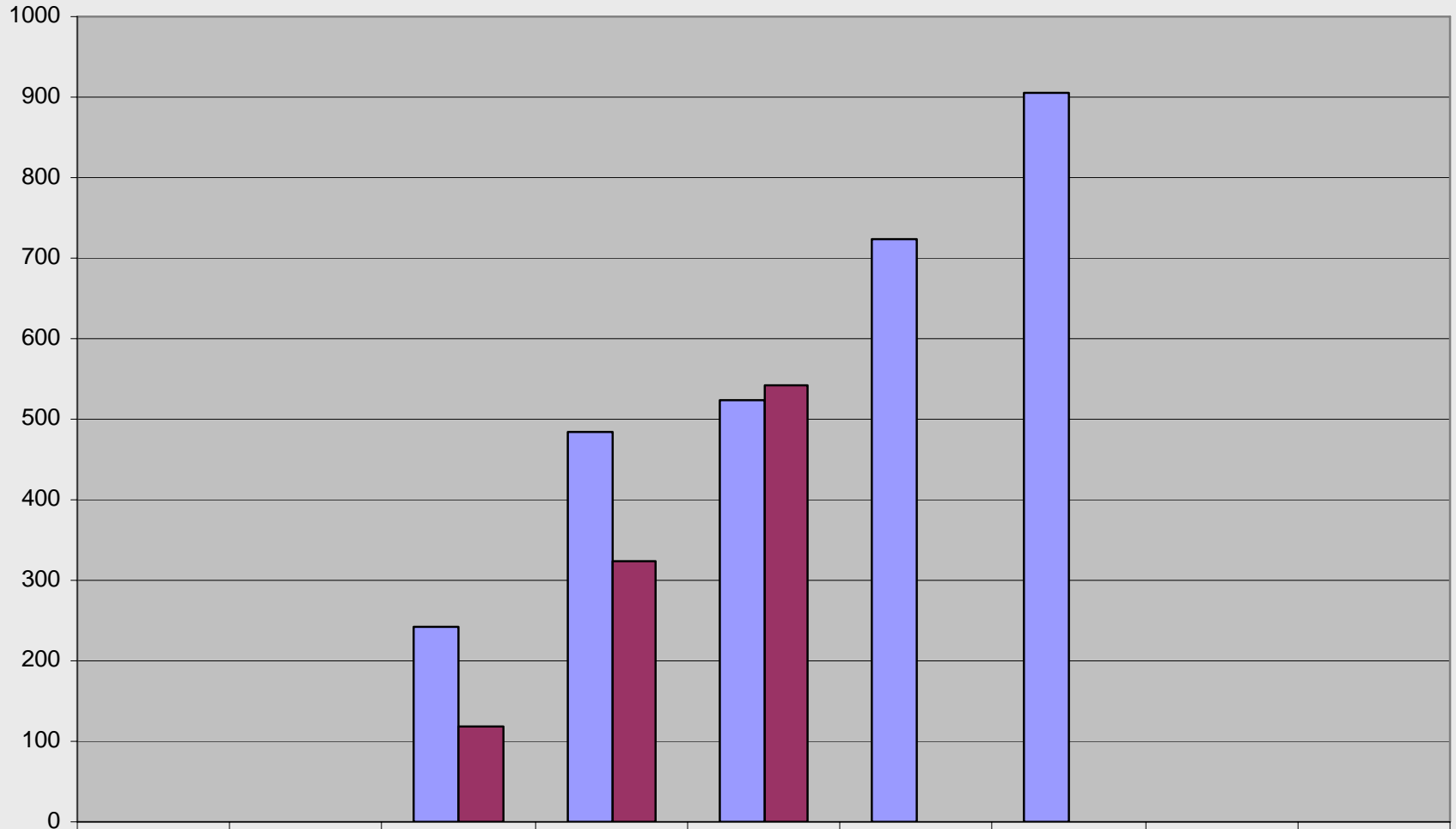
as/of: 12/31/06 (28)	Contract 28 (Revoli)
Total Mainline Pipe:	21,530 lf
Installed to date:	6,180 (29%)
Total # Wyes:	230
Installed to date:	58 (25%)
Calendar Days:	540
Days to date:	182 (34%)
Total Contract Value:	\$4,979,521
Invoiced to date:	\$944,307 (19%)

Phase 8 Status: Construction Issues

- **Contract 26 and 27 Line Item Overruns**
- **Contract 28 Change Order Requests**
- **Final Paving**

Phase 8: Sewer Availability

Phase 8: Sewer Availability (cumulative)

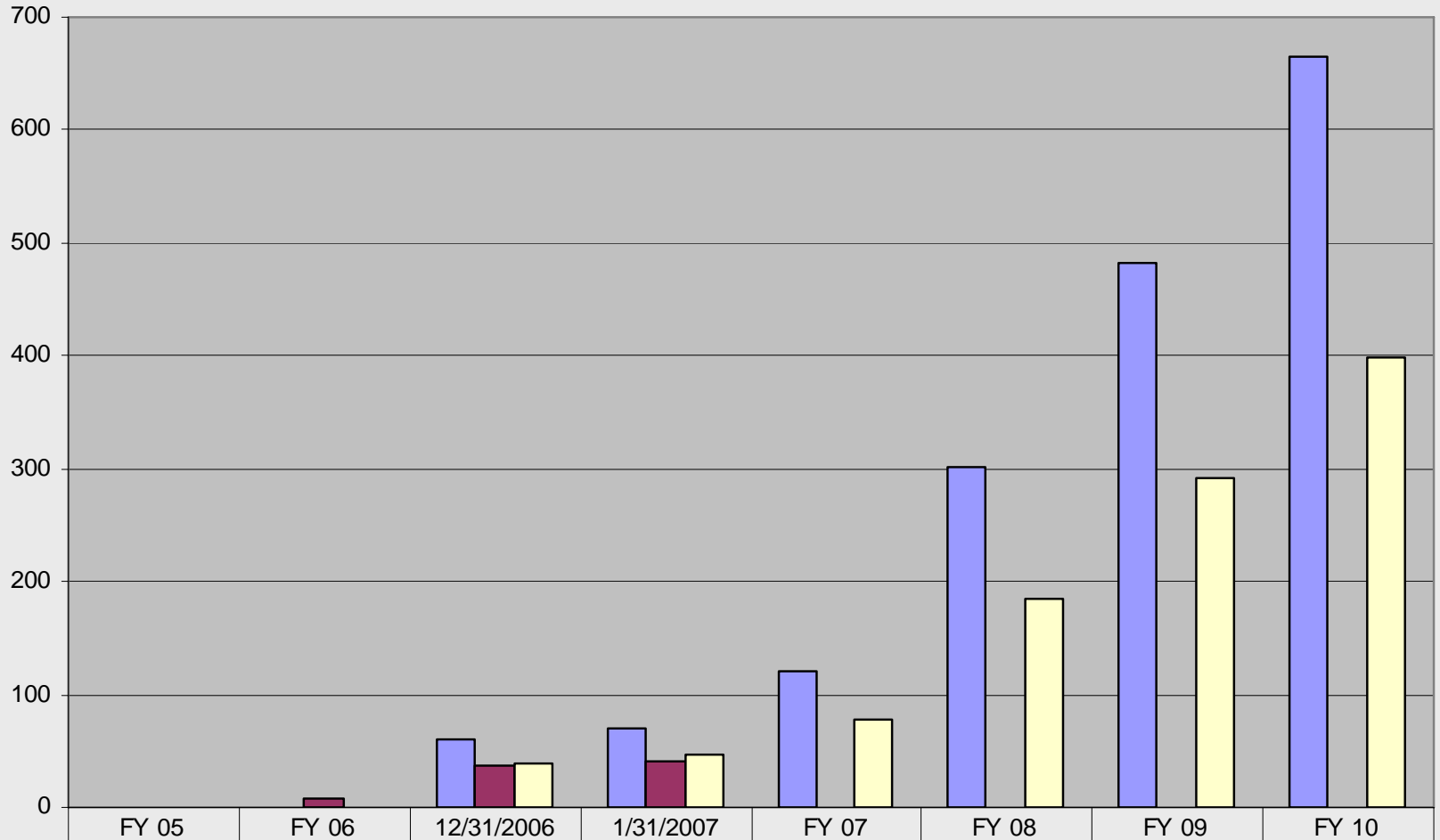


■ 2003 Study

■ Actual

Phase 8: Sewer Connections

Phase 8: Sewer Connections (cumulative)



■ 2003 Study	0	0	60	70	120	302	483	665
■ Actual	0	7	37	40				
□ 12.5% Projection		0	39	46	79	185	292	399

Phase 9 Status: Design Issues

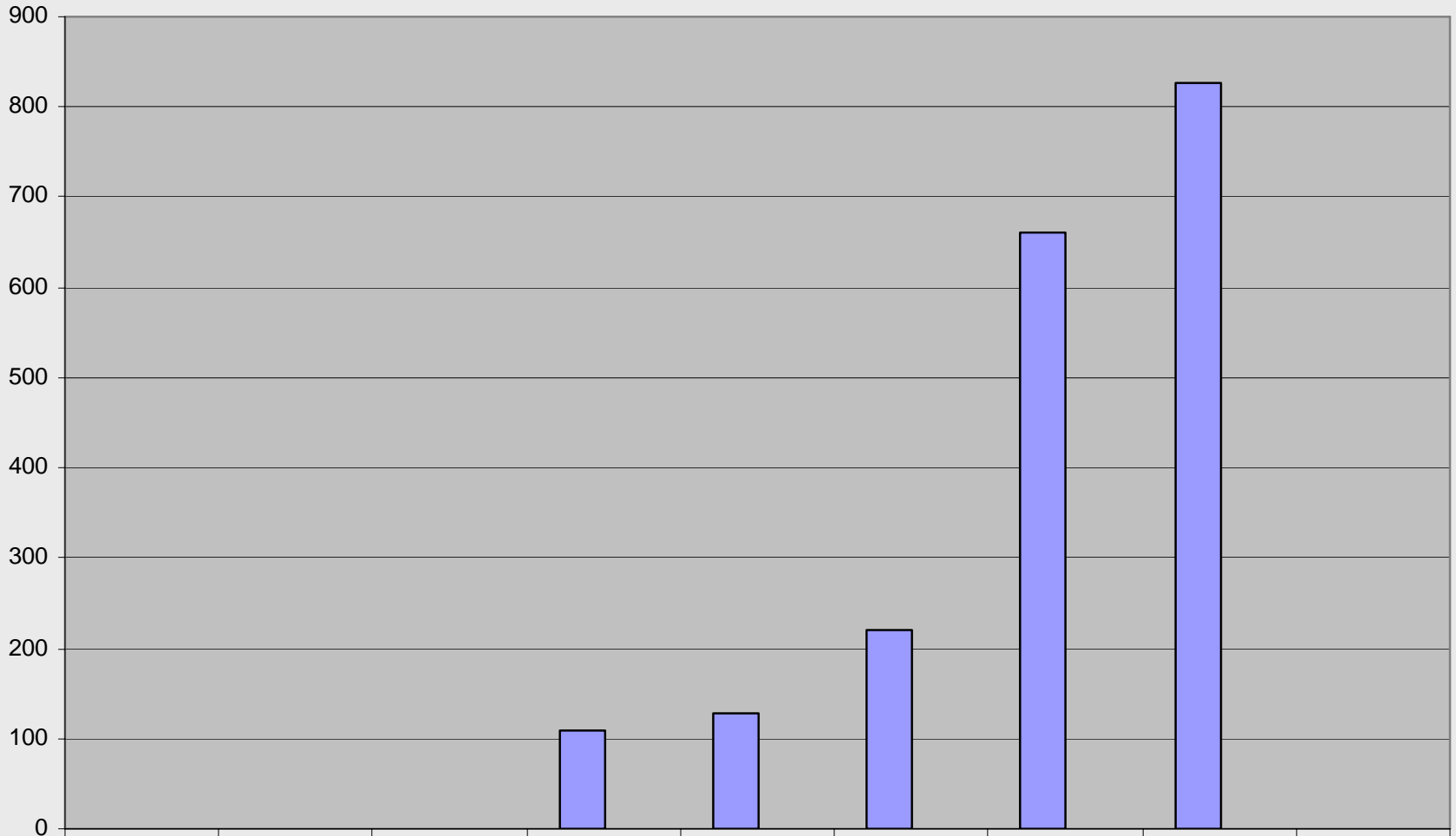
- **Nina Drive/Devonshire Road Pumping Station**
- **Contract 31 Bid Opening**
- **Extensive Rock**
- **Easements**
- **Connections to Lowell**

Phase 9 Status: Construction Update

as/of: 12/22/06 (29) 12/22/06 (30)	Contract 29 (Albanese Bros.)	Contract 30 (Albanese D&S)
Total Mainline Pipe:	33,100 lf	28,575 lf
Installed to date:	12,709 (38%)	6,379 (22%)
Total # Wyes:	325	250
Installed to date:	106 (33%)	66 (26%)
Calendar Days:	540	540
Days to date:	186 (34%)	97 (18%)
Total Contract Value:	\$6,230,611	\$5,417,728
Invoiced to date:	\$1,834,508 (29%)	\$995,472 (18%)

Phase 9: Sewer Availability

Phase 9: Sewer Availability (cumulative)

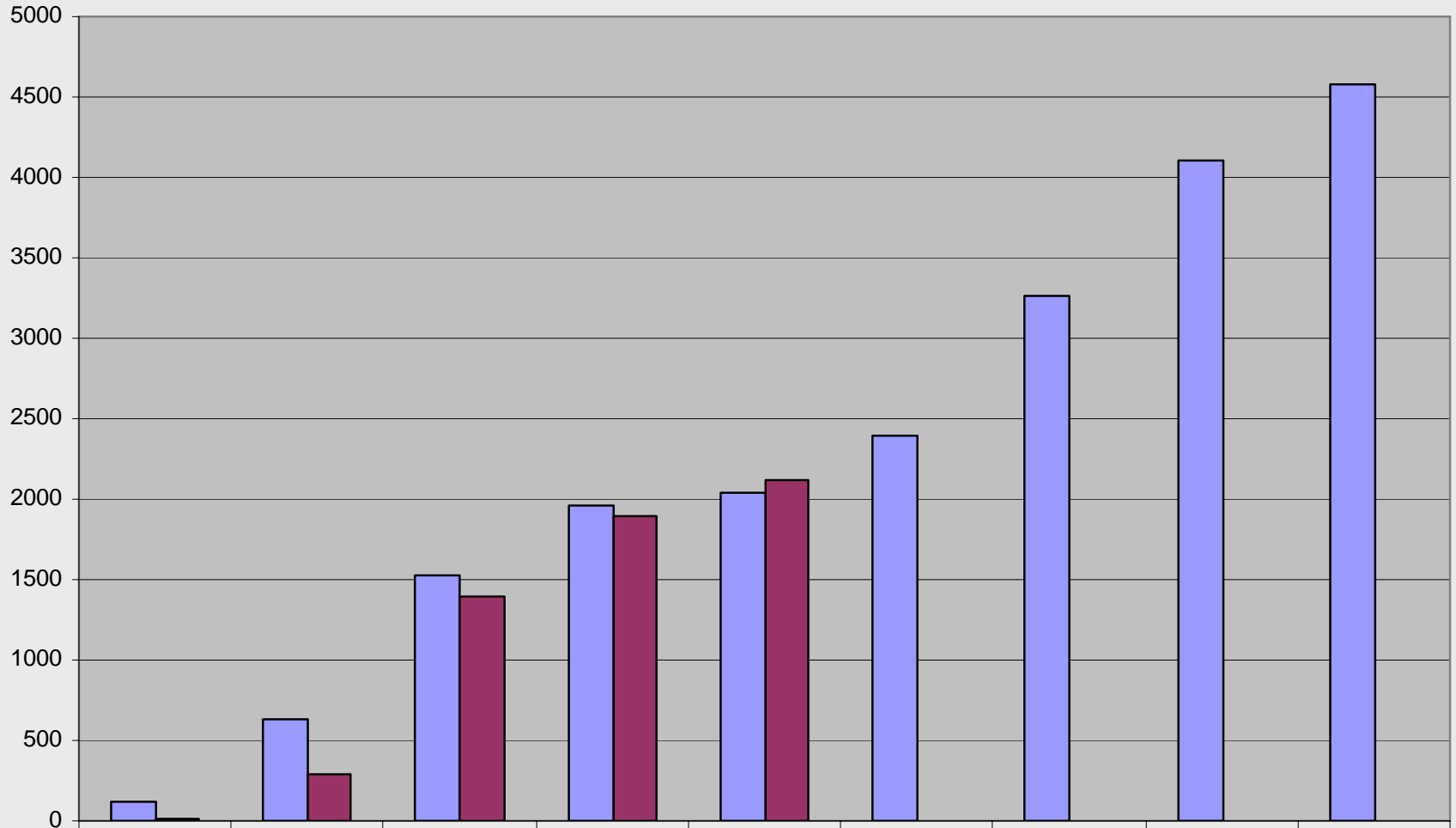


■ 2003 Study

■ Actual

Program Totals: Sewer Availability

Program Totals: Sewer Availability (cumulative)



■ 2003 Study

■ Actual

FY 04

FY 05

FY 06

12/31/2006

1/31/2007

FY 07

FY 08

FY 09

FY 10

116

638

1521

1960

2033

2398

3263

4108

4573

14

288

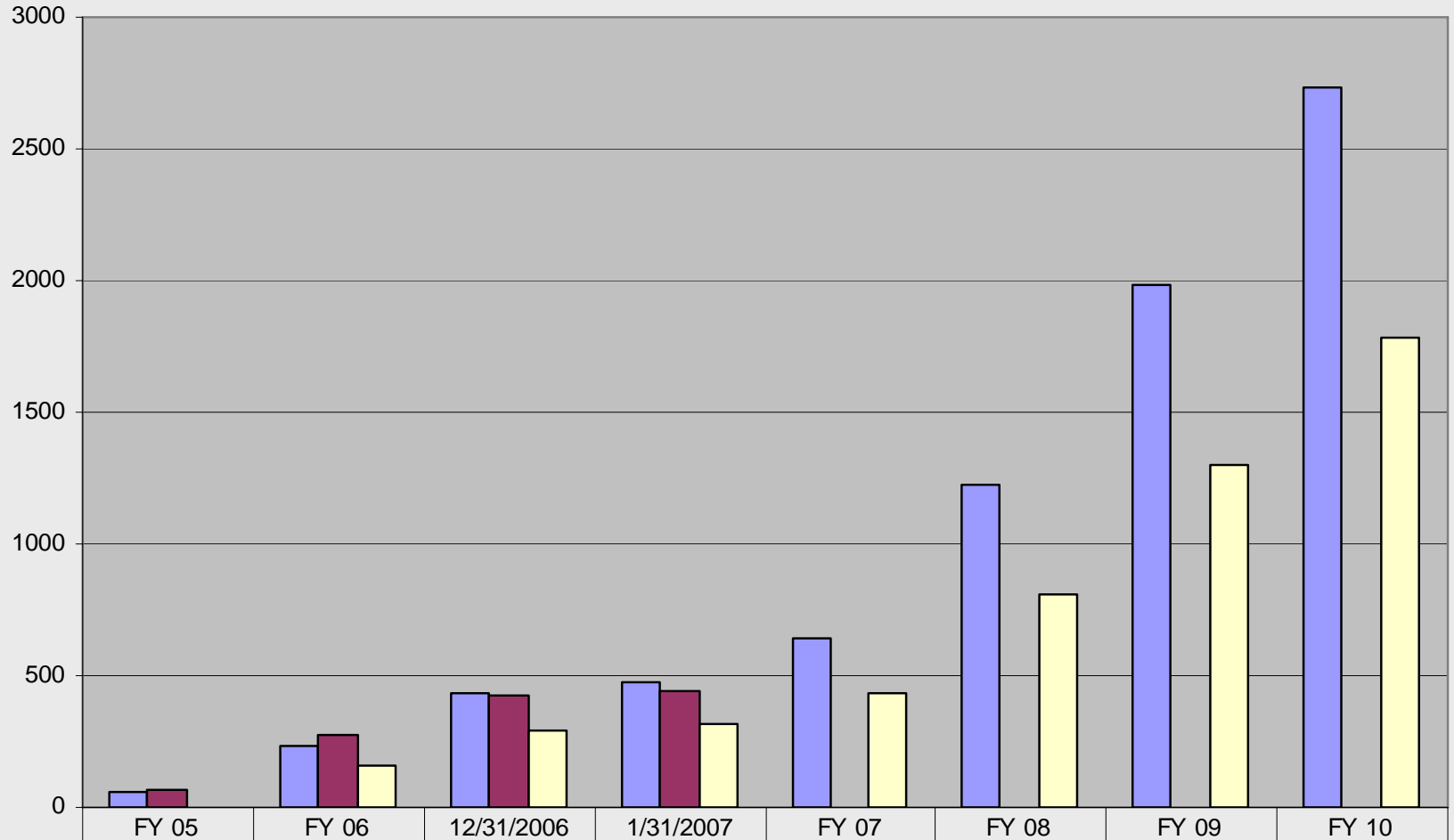
1389

1897

2113

Program Totals: Sewer Connections

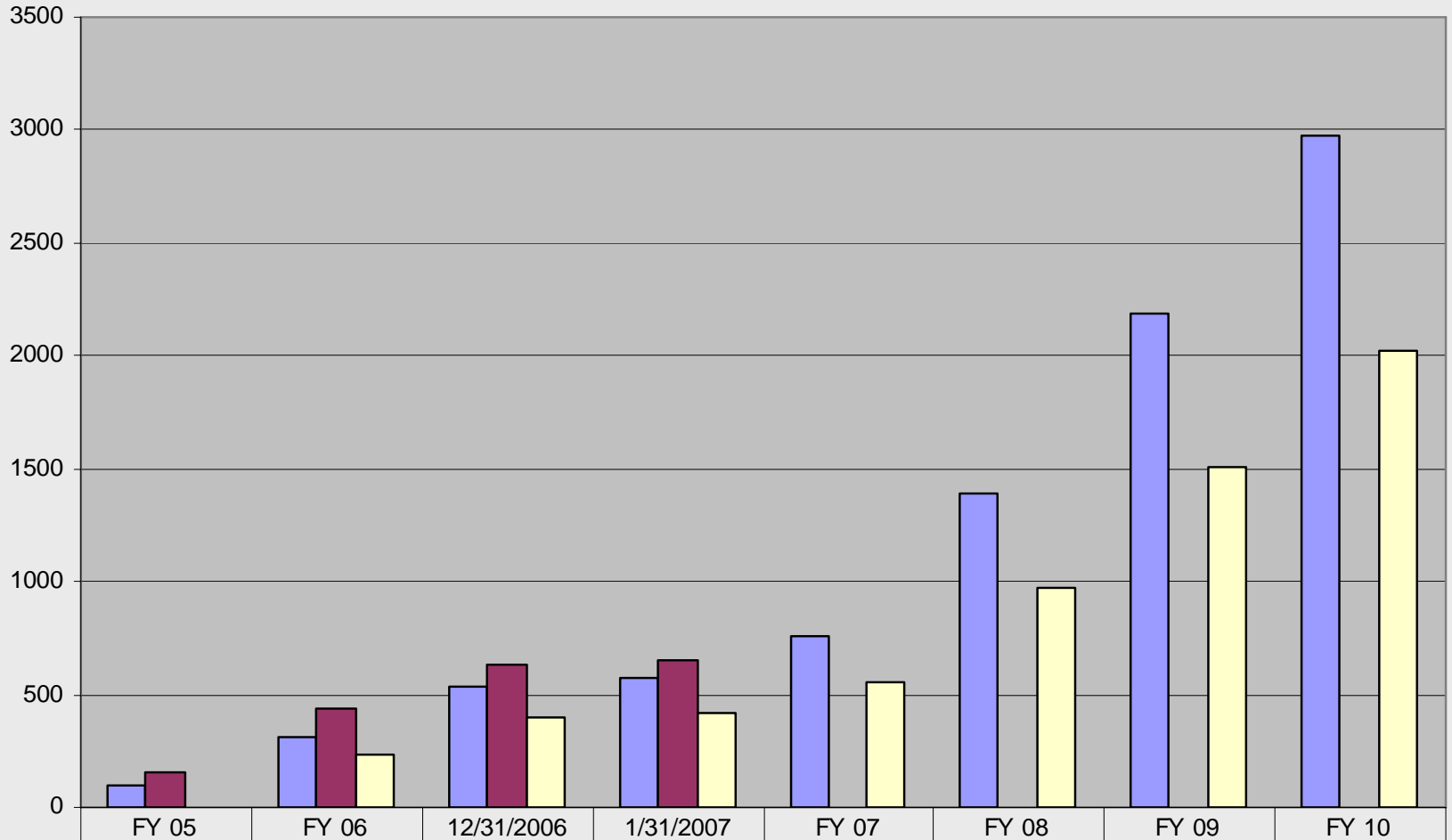
Program Totals: Sewer Connections (cumulative)



2003 Study	58	232	437	471	642	1226	1982	2732
Actual	69	277	426	439				
12.5% Projection		155	295	319	435	812	1303	1780

Town-Wide Totals: Sewer Connections

Town-Wide Sewer Connections (cumulative)



2003 Study	98	312	538	575	763	1388	2186	2978
Actual	156	440	634	651				
12.5% Projection		235	396	423	556	974	1507	2026

Sewer Program Summary

■ Total Construction Contracts:	16
➤ Completed (21 thru 27):	7
➤ Under Construction (28, 29 & 30):	3
➤ Out to Bid (31):	1
➤ Under Design (32 & 33):	2
➤ Survey Underway (34, 35 & 36):	3